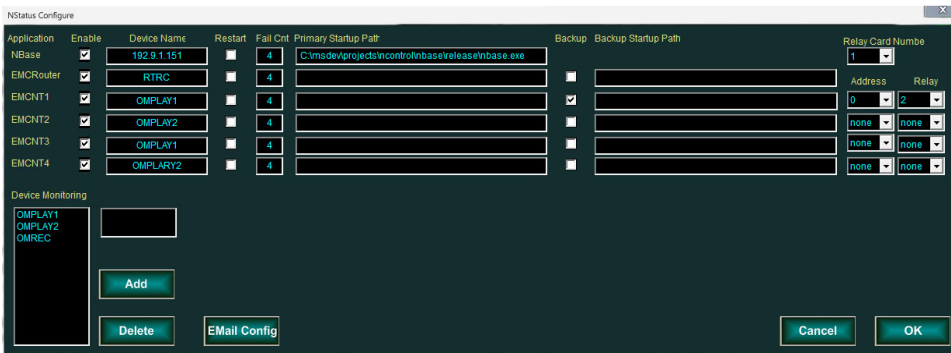
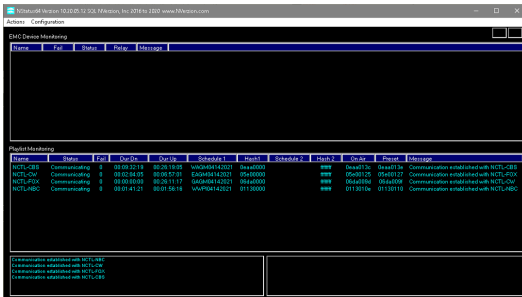


## STATUS AND MONITORING SOFTWARE

NStatus Status & Monitoring Software application provides increased peace of mind by monitoring specified applications and notifying operators when it senses any loss of communications. NStatus can easily be configured to sense loss of functionality in an application - and can even make an attempt to restart it. It can also be configured with a redundant mode, which attempts to launch a backup copy of the application that it senses is no longer running.

NStatus monitors the following applications; NBase media database manager, EMC-Router control, and up to four instances of EMC-NT Ethernet machine control.

Designed to run in the background, NStatus comes to the foreground only when it senses a problem that needs to be addressed. When connected to an NVerzion automation network, NStatus can also support an unlimited number of connected NVerzion applications.



### Features:

- Monitors EMC IP socket connections
- Enables and validates machine control commands to a backup EMC device when lost connection is detected
- Optionally starts a backup instance of an application that is recognized as operating incorrectly
- Easy to read and identify warnings and notifications
- Supports a virtually unlimited number of NStatus instances

### Benefits:

- Quickly notifies operators of problems, enabling fast decisions and limited downtime
- Can be set to restart system applications automatically
- Runs on any PC configured to run on an NVerzion automation network